



***Accessibility info:***

ACEDIA is a new dance theatre performance by Southpaw Dance Company.

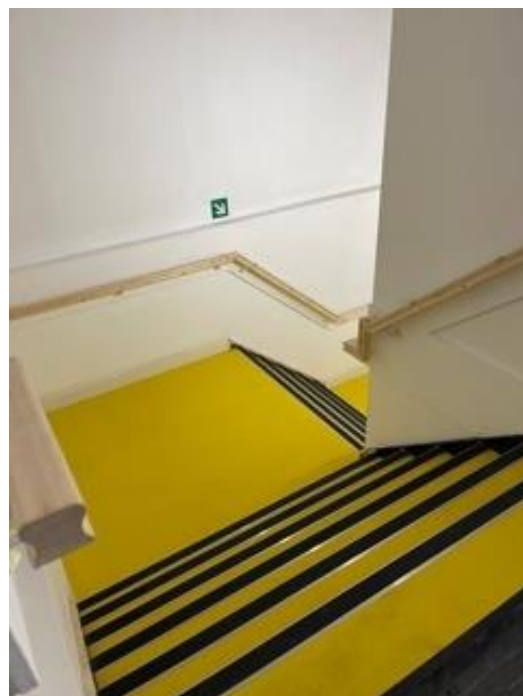
The Athenaeum is only accessible via stairs.

Front entrance and first flight  
of stairs of 16 steps.



There are 2 smaller flights of 5 and 6  
steps taking it round the corner

There are 27 steps altogether.



There is an accessible toilet on the ground floor.  
There is also a toilet up the stairs which can accommodate a wheelchair.



Running time is just over 20 minutes long.

The performance uses projection to create multiple versions of the same performer.

Performance has flashing lights and projection that is intended to be immersive and effect the senses.

Part of the experience is experienced through your digital device – iPhone or android phone.

It observes a person in lockdown, and their many different versions of coping with isolation.

The performance explores themes of Lockdown / Isolation / Mental Health / How we have coped with lockdown / reconnecting.

For further accessibility info email: [info@sunderlandculture.org.uk](mailto:info@sunderlandculture.org.uk)