



SUNDERLAND
MUSEUM & WINTER GARDENS



SUNDERLAND
CULTURE

SUNDERLAND MUSEUM & WINTER GARDENS VISUAL STORY

This story is to help you plan your visit to
Sunderland Museum & Winter Gardens.

There are so many things to see and do in Sunderland Museum & Winter Gardens. You can visit for free and stay as long as you want within the museum opening times. You can check our website for the latest opening times [here](#).



GETTING TO SUNDERLAND MUSEUM AND WINTER GARDENS

You can travel to Sunderland Museum and Winter Gardens in lots of ways. Most people come by car, train or bus.

If you travel by car, there is a pay and display carpark at the Civic Centre which is a 4 minute walk away. The charge for the carpark is £1.20 per hour or £3.50 day rate.

You might travel by bus and there are lots of bus stops close by. Sunderland Station is the closest Metro train station. Sunderland Station is only a 4 minute walk away.



ARRIVING AT RECEPTION

As you walk up to Sunderland Museum and Winter Gardens you will see the doors to reception and the shop. These doors will open by themselves as you get closer to them.

The reception and shop is light with lots of windows.

This area can be bright on sunny days.

There will be a member of staff at the reception desk when you arrive. This person can help if you need anything but you don't need to stop and talk if you don't want to.

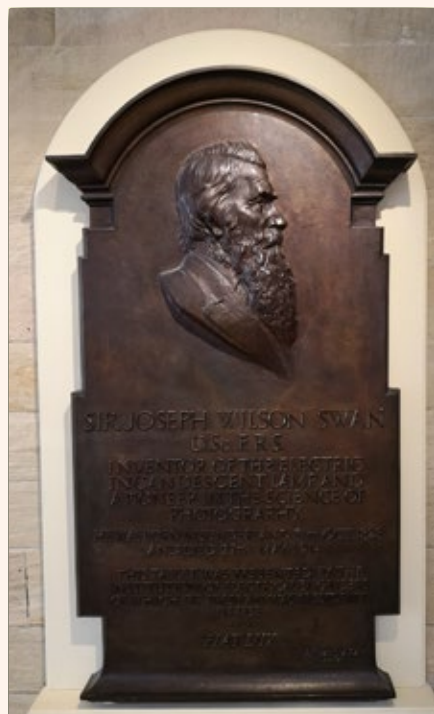


MUSEUM STREET

Once you have walked through the reception and shop you will see a corridor called 'Museum Street'. You can get to all of the rooms on the ground floor from Museum Street.



While you walk along Museum Street you will see different statues and pictures.



TIME MACHINE

This room has lots of historical items in it.

You will notice music and sound effects playing while you are in this room. There are buttons to press that make sounds. There are also things you can touch in here. You will see stuffed animals on display. These are not alive and just to look at. There is also a diver's suit to look at.



Some of the exhibits you will see are a crocodile skull, some stuffed birds and a stuffed lion.

SUNDERLAND POTTERY

This is a big and usually quiet room. In here you will see lots of pottery made in Sunderland. It is all displayed in glass cabinets.

There are some buttons to press to hear stories of people who made pottery.



COAL

This area tells the story of coal mining in the North East. There are different rooms inside this area. There are buttons to press to light up a map. There is also a film to watch, telling the story of a young coal miner.



There can be quite a lot going on in this area. The space is quite dark in some places and bright in others. There is brass band music playing in the background and there are sounds from the film that can be heard.

COAL Page 2



Press the buttons to light up the map.



This room looks like a kitchen would have looked like in the 1960s.



Some medical equipment to help miners who were unwell.



This bird is hiding in this room but it is not real.

SECRETS OF THE PAST

Secrets of the Past has some very old items on display.



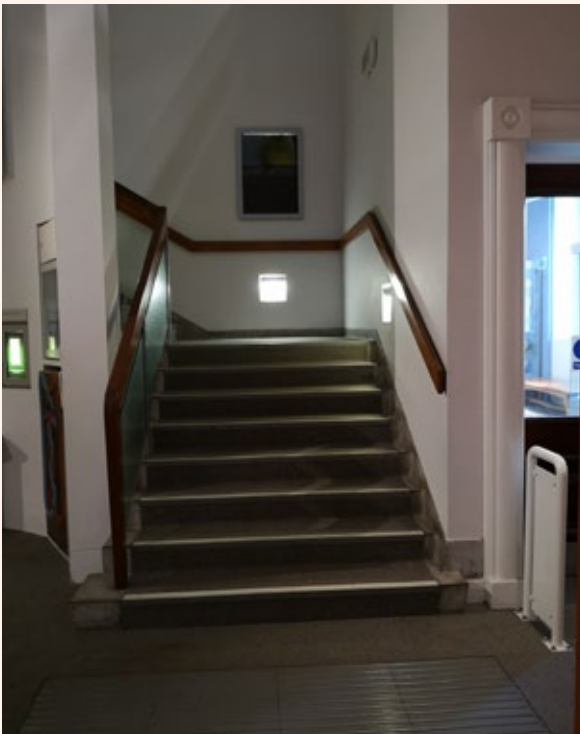
This sculpture of an animal's head turns around so you can see it from all sides.

SECRETS OF THE PAST Page 2



This skull is on display under a glass dome.

You will be able to hear sounds from displays upstairs in this room.



You will see some steps that lead up to the exhibitions on the first floor.

If you would prefer to use the lift you will find it by returning to Museum Street, turning left into the tall corridor space with the glass ceiling and turning right through the wooden doors.

CAFÉ

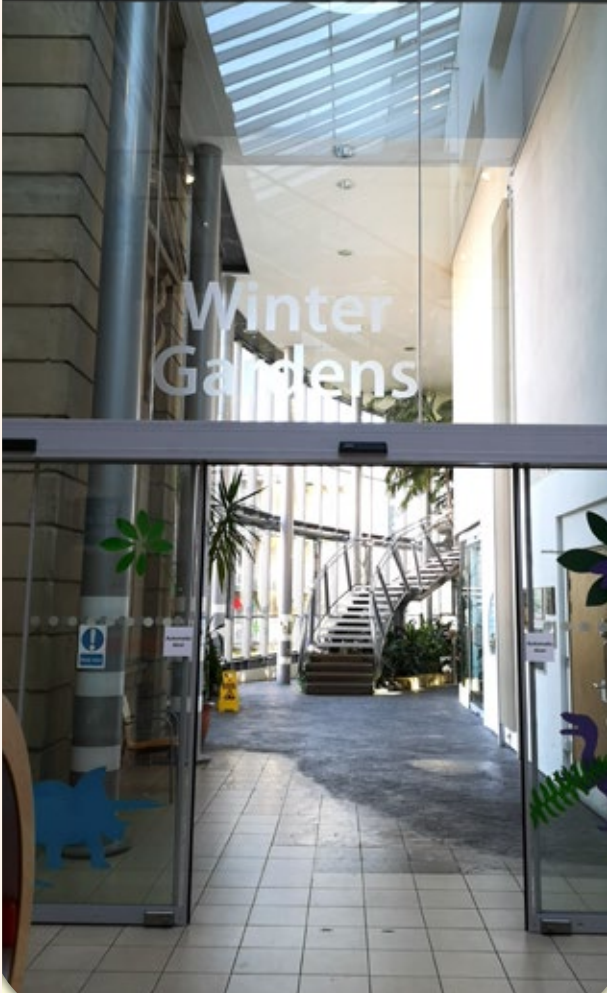
You can buy food and drinks here. The staff are very friendly and will be happy to help you if you have any questions about the cafe. Staff will come to serve you at your table.

There are noises and smells from the coffee machines in this room. There is also some music playing in the background.

If you have a restricted diet or have any dietary requirements, please speak to the staff.



WINTER GARDENS

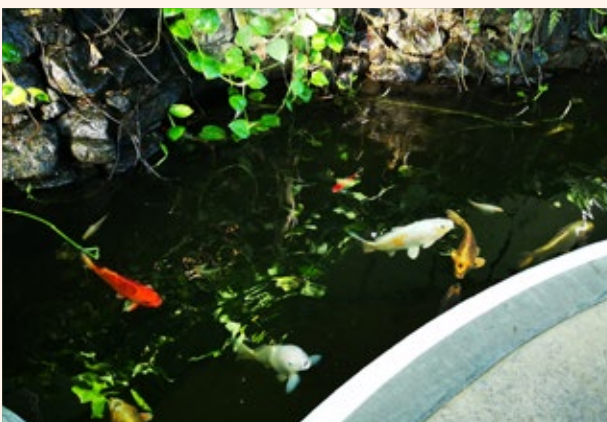


You will go into the Winter Gardens through some big glass doors.

When you go into the Winter Gardens you will be able to smell the plants that are in there.

The sounds in here are rainforest or dinosaur sounds played through a speaker.

This room can be bright on a sunny day. It can also feel warm.



There is a fish pond in the Winter Gardens.

WINTER GARDENS Page 2



These steps lead up to the treetop walkway.



There is a path that leads around the Winter Gardens.

SUNDERLAND'S GLORIOUS GLASS



You will see lots of glass plates, vases and ornaments behind big windows.

There are noises from interactive exhibits that can be heard in this area.

20TH CENTURY SUNDERLAND



This room has lots of different things to see. There are buttons to press where you can watch short videos and hear stories about how people lived in the past.

There are noises of ships being played in the exhibition upstairs that can be heard in here.

LOST WORLDS



In the Lost Worlds gallery you will see, and be able to touch fossils and there are buttons to hear sounds and turn on special UV lights.

There are background sounds of waves, bubbling liquid and wind playing in the Lost Worlds area.



WORLDS ALIVE



Most of the Animals in Worlds Alive are stuffed and not alive.

There are buttons to press that make some of the exhibits light up or make sounds.



SPECIAL EXHIBITIONS



The Special Exhibitions room can change and have different displays depending on what has been planned.

THE ART GALLERY

L.S. LOWRY



The Art Gallery space is divided up into 4 sections. The first has work by an artist called L.S. Lowry. Lowry was famous for painting pictures with people and factories in. The people he paints in his pictures look a bit like matchstick people.

At the end of this section is a picture you can touch. It is a copy of one of Lowry's paintings that has been made to stand out from the page.



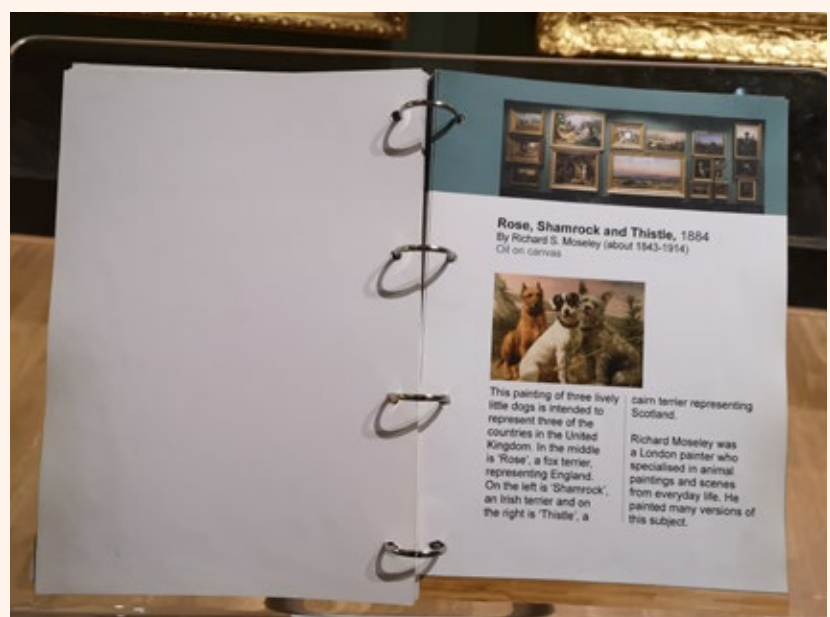
THE ART GALLERY

VICTORIAN GALLERY



The Victorian Gallery has lots of oil paintings hung on the walls and there is a sculpture of a Chinese mountain scene with temples. There are books called Gallery Guides on display that you can use to read more about each of the paintings.

The guide has information about each painting.



ART GALLERY

CHANGING DISPLAYS



This area of the art gallery has changing displays which often feature the Museum's own collection of art or works we borrow from other galleries. It is best to check our website before you come to find out what is on or you might just like to discover what we have on show when you visit. The guide has information about each painting.

LAUNCHED ON WEAR SIDE

The Launched on Wearside Gallery has models and paintings of ships built in Sunderland and tells the story of working life in the local shipyards.



There are sounds of the seaside being played here. They can get quite loud at times. There is a big model of the front of a ship as you walk up the stairs.

LAUNCHED ON WEARSIDE PAGE 2



A globe model



Model ships on display



Parts of a ship



A short film playing

TOILETS

There are toilets on all levels of the building.

Through this door on the ground floor.

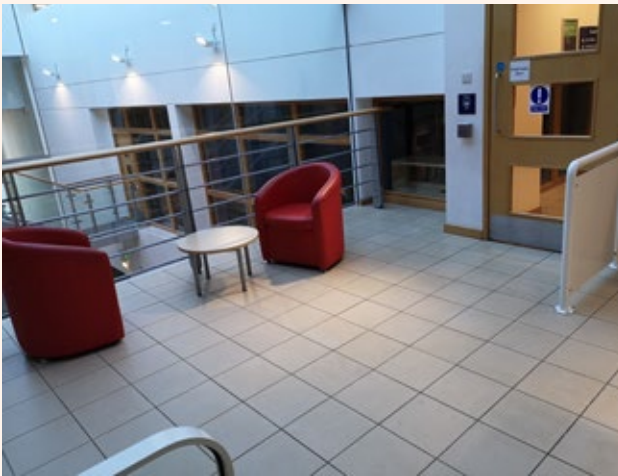


The first floor accessible toilet.



PLACES TO REST

The museum has many places to sit and rest when you choose to. The seats are spread out over all floors.



You are always welcome to visit our venue when we are open. If you would like any more information or have any questions, please contact us in the following ways:

Sunderland Culture
info@sunderlandculture.org.uk

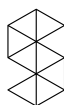
National Glass Centre /
Northern Gallery for Contemporary Art
info@nationalglasscentre.com
0191 515 5555

Arts Centre Washington
acw@sunderland.gov.uk
0191 561 3455

Sunderland Museum and Winter Gardens
museums@sunderland.gov.uk
0191 561 2323



SUNDERLAND
MUSEUM & WINTER GARDENS



SUNDERLAND
CULTURE


Sunderland
City Council



HERITAGE
FUND



LOTTERY FUNDED

This guide was created through Sunderland Culture's Great Place programme, thanks to National Lottery funding from Arts Council England and National Lottery Heritage Fund, and supported by Sunderland City Council.